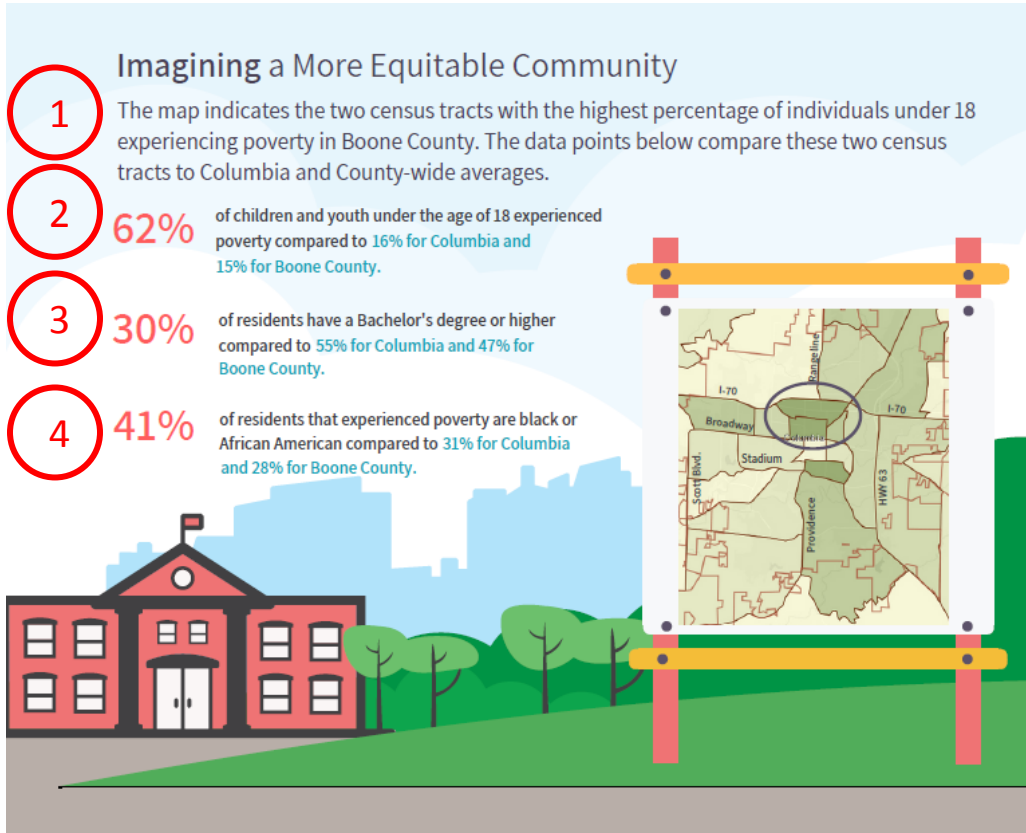


A Focus on Poverty – Boone County, Missouri (2018)

Boone County Community Services Department

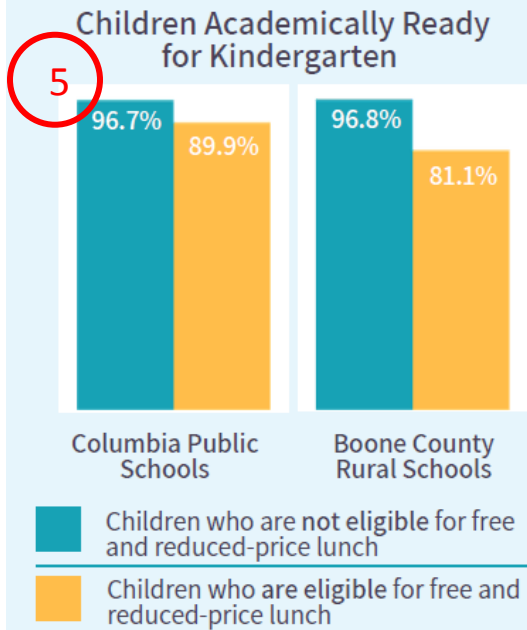
Appendix

This appendix was created in correspondence to the 2018 Poverty Report created by the Boone County Community Services Department. References are provided for each data point and provide an explanation on how information in the report was developed. For questions regarding the report, please contact the Boone County Community Services Department at (573) 886-4298 or email communityservices@boonecountymo.org.



Ref #	Source	Notes
1	ACS – Poverty Status in the Past 12 Months (2012-2016)	Determined by exporting data into excel and sorting all census tracts by the % of population under 18 years. This population was selected due to a high percentage of college students living in Columbia.
2	ACS – Poverty Status in the Past 12 Months (2012-2016)	<ul style="list-style-type: none"> • Calculated average % of population under 18 years for census tract 9 and 21. • Utilized % for Columbia city, MO; Columbia, MO Metro Area • Utilized the % for Boone County under 18.
3	ACS – Educational Attainment (2012-2016)	<ul style="list-style-type: none"> • Calculated average % with a bachelor’s degree or higher for census tract 9 and 21. • Utilized % for Columbia city, MO; Columbia, MO Metro Area • Utilized the % for Boone County with a bachelor’s degree or higher.
4	ACS – Poverty Status in the Past 12 Months (2012-2016)	<ul style="list-style-type: none"> • Calculated average % of population that is Black or African American alone for census tract 9 and 21. • Utilized % for Columbia city, MO; Columbia, MO Metro Area • Utilized the % of population that is Black or African American alone for Boone County.

POVERTY IS EXPERIENC



6 Columbia Public Schools Drop Out Rates:

- 6.2 Black rate
- 3.2 Male rate
- 2.7 Total rate
- 2.2 Female rate
- 1.9 White rate
- 1.7 Hispanic rate



Educational disparities have multidimensional ramifications, affecting parents' earning potential, job stability, and ability to support their children's education.



Education

Onnor

7 Poverty Rate by Educational Attainment

32% in poverty have less than a high school degree.

11% in poverty have a high school degree.

5% in poverty have a bachelor's degree or higher.

Reference #	Source	Notes
5	Cradle to Career Alliance – 2017 Community Report Card	Data can be found on page 10
6	Missouri Department of Elementary and Secondary Education (DESE) – District and School Information (District Annual Dropout Rate – excel)	<ul style="list-style-type: none"> • 2017 data for Columbia district. • DESE's drop-out definition and rate calculation
7	Boone Indicators Dashboard – Poverty Rate by Educational Attainment (ACS Indicator Data)	2016 data for Boone County

ED IN MULTIPLE FORMS

8

\$803

average monthly rent

50% = \$19,272

A household needs a minimum net income of \$19,272 to not be severely rent burdened by the average rental cost in Columbia.

9

30% = \$32,112

A household needs a minimum net income of \$32,112 to not be cost burdened by the average rental cost in Columbia.

11


12,782 cost burdened renters in Columbia

10

HUD Definitions

Severe Rent-Burdened - those who pay more than 50 percent of their income for housing.


Cost-Burdened - those who pay more than 30 percent of their income for housing.



12

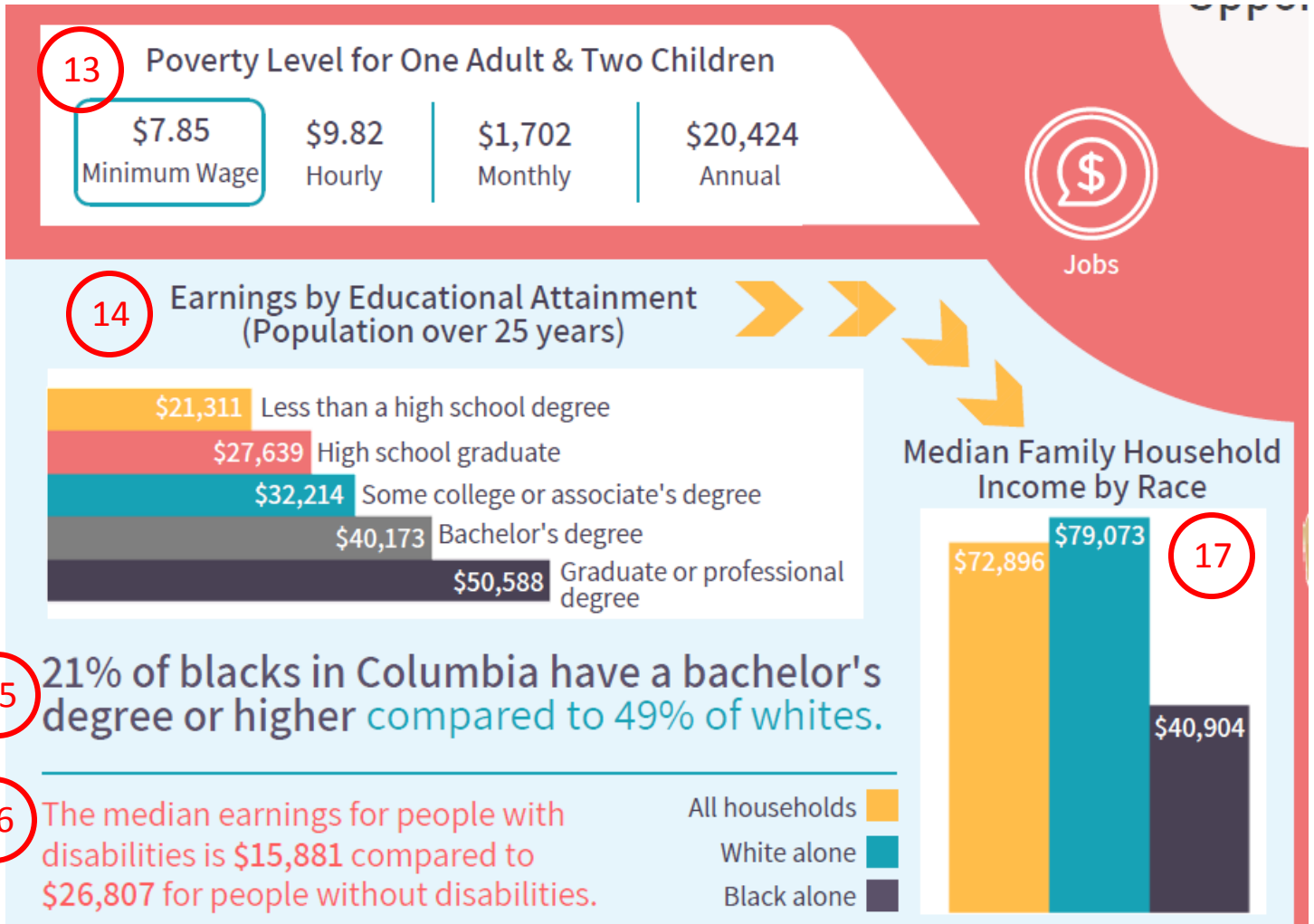
Households Spending Over 30% Income on Housing

31% of households are cost burdened in Boone County.	53% of renters are cost burdened in Boone County.	16% of home owners are cost burdened in Boone County.
--	---	---

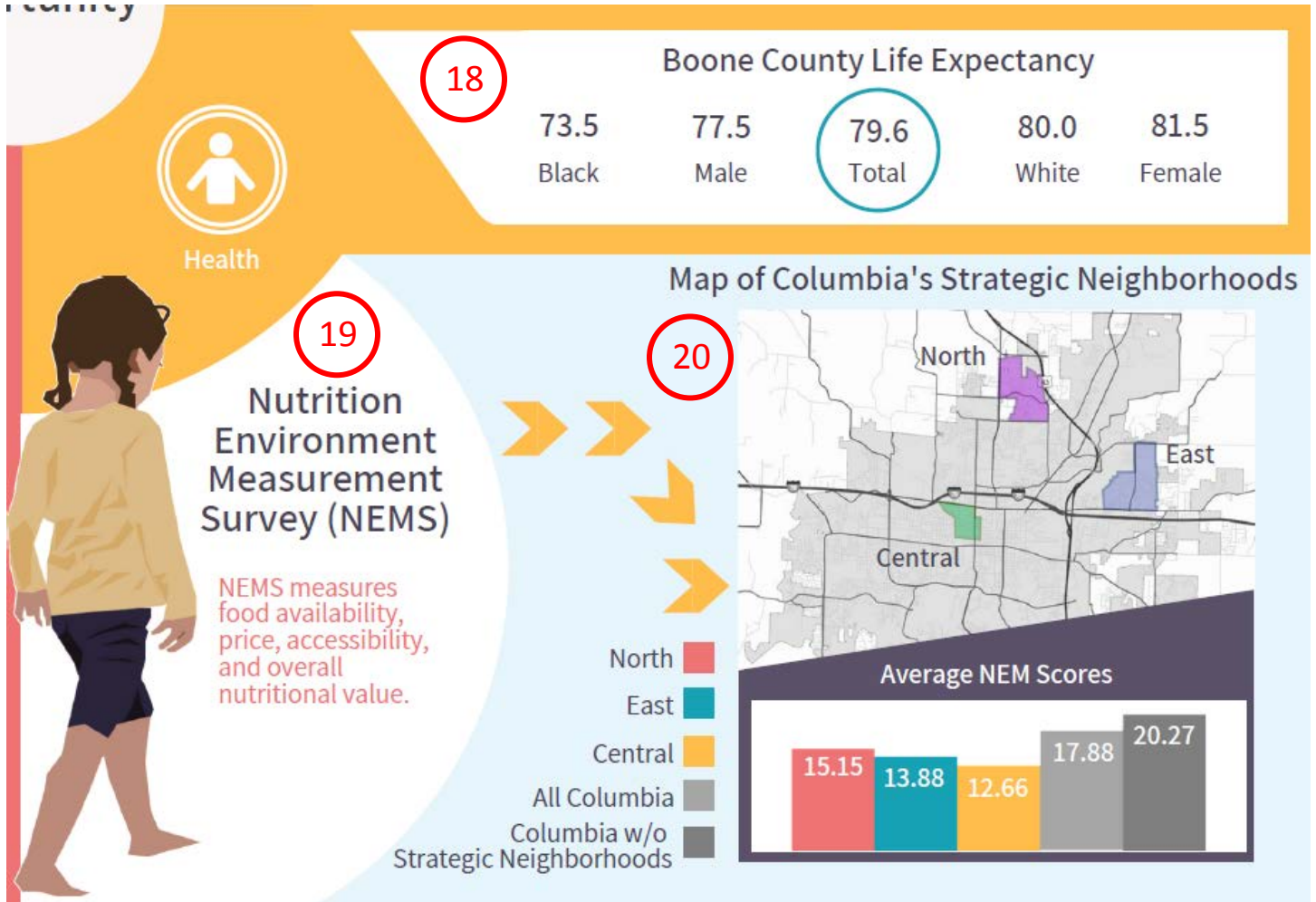
 Housing

tunity

Reference #	Source	Notes
8	ACS – Median Gross Rent (Dollars) (2012-2016)	Indicator also provided by the City of Columbia Community Development Department (Housing and CDBG Programs).
9	Average rental rate utilized by ACS indicator (above)	BCCS staff calculated what the minimum income a renter in Columbia would need to be cost burdened or severely cost burdened with the average rental rate in Columbia.
10	HUD – Affordable Housing	Definition utilized from HUD
11	ACS - Selected Housing Characteristics (2012-2016)	2012-2016 data for Columbia city, MO; Columbia, MO Metro Area
12	Boone Indicators Dashboard – Households Spending Over 30% of Income on Housing (Adjusted) (ACS Indicator Data)	2015 data for Boone County



Reference #	Source	Notes
13	Boone Indicators Dashboard – Socio-Economic and Health Inequity (Columbia/Boone County Department of Public Health and Human Services)	<ul style="list-style-type: none"> MO Department of Labor and Industrial Relations minimum wage as of 8/1/2018 Poverty Level for One Adult and Two Children information used from slide 9.
14	Boone Indicators Dashboard – Median Earnings by Educational Attainment, Individuals 25 and Older (2012-2016) (ACS)	2012-2016 data for Boone County
15	ACS – Educational Attainment (2012-2016)	2012-2016 data for Boone County
16	ACS – Selected Economic Characteristics for the Civilian Noninstitutionalized Population by Disability Status (2012-2016)	2012-2016 data for Boone County
17	Boone Indicators – Median Income Family Households (2012-2016) (ACS)	2012-2016 data for Boone County



Reference #	Source	Notes
18	Missouri Department of Health and Senior Services – Life Expectancy (2004-2012)	2004-2012 data for Boone County
19	University of Pennsylvania – Nutrition Environment Measures Survey	Definition used from NEMS website
20	Build this Town – Community Food Assessment	Data collected and processed by Heather Gillich Consulting, LLC